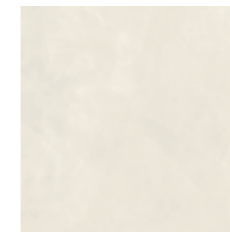




MATERIA E COLORE  
MATTER AND COLOUR

# CEMENT PROJECT

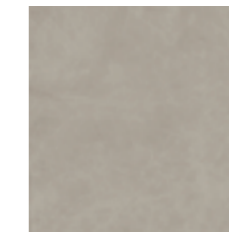
URBAN SPACE



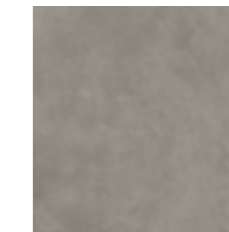
COLOR-00 CEM



COLOR-10 CEM



COLOR-20 CEM



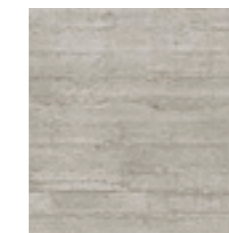
COLOR-30 CEM



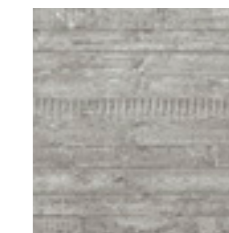
COLOR-40 CEM



COLOR-10 WORK



COLOR-20 WORK



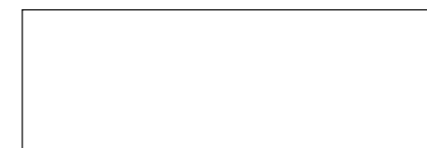
COLOR-30 WORK

## KERLITE 5plus

Superfici / Surfaces:  
NATURALE

± 5,5 mm

100x300 cm  
39"x118"

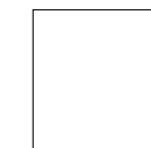


50x150 cm  
19½"x59"



Only WORK

100x100 cm  
39"x39"



Only CEM

### KERLITE easy

Kerlite 5plus è indicata per essere posata con il sistema Kerlite Easy (vedi sezione dedicata a pag. 368)  
Kerlite 5plus is suitable for installation with the Kerlite Easy system (see focused section on page 368)

#### CARATTERISTICHE TECNICHE / TECHNICAL CHARACTERISTICS

Tabelle tecniche a pag. 378 - 380  
Technical tables on page 378 - 380



RESISTENZA ALLO SCIVOLAMENTO  
SLIP RESISTANCE  
R9 CEM  
R10 WORK



BASSA STONALIZZAZIONE  
LOW DESHADING  
V2

#### GARANZIA E ANTIBATTERICO / GUARANTEE AND ANTIMICROBIAL



GARANZIA 20 ANNI  
20 YEARS GUARANTEE



PROTEZIONE ANTIBATTERICA PROTECT®  
PROTECT® ANTIMICROBIAL PROTECTION