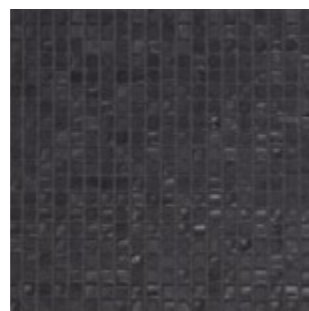
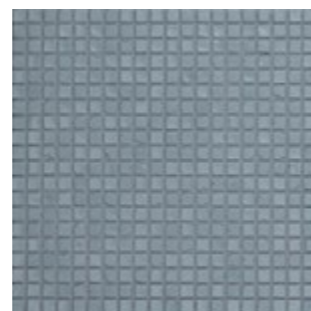




MM 180 - Talco



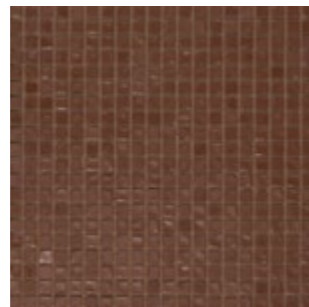
MM 200 - Grafite



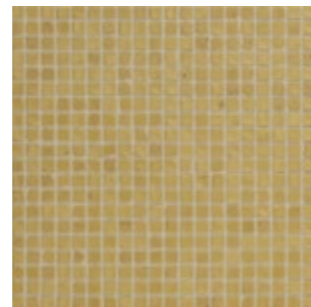
MM 260 - Avio



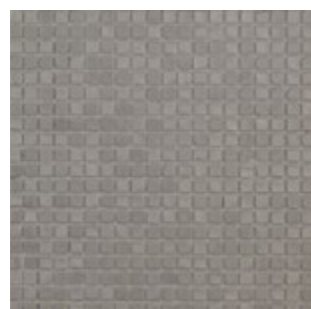
MM 185 - Riso



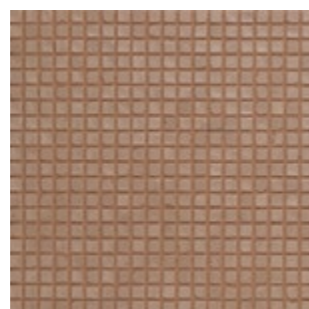
MM 235 - Mattone



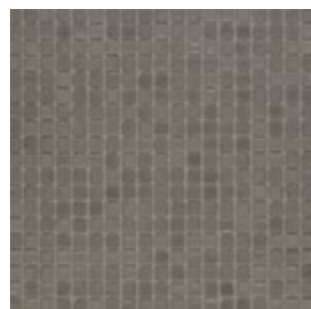
MM 265 - Ocra



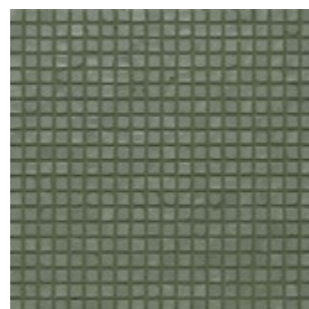
MM 190 - Cenere



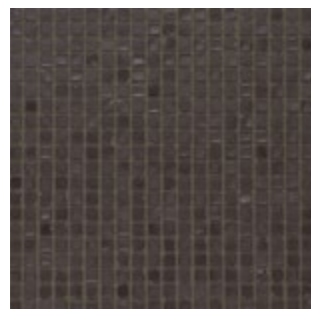
MM 240 - Salmone



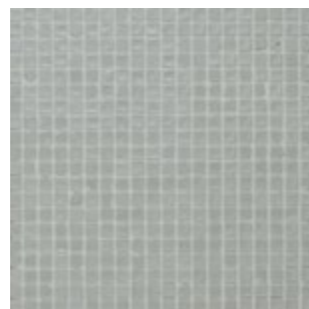
MM 194 - Fango



MM 250 - Salvia

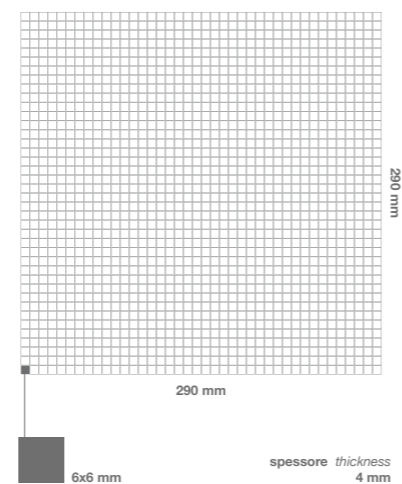


MM 198 - Ebano



MM 255 - Maya

Formati Size



| Codice mosaico <i>Mosaic code</i> | Descrizione mosaico <i>Mosaic description</i> | Fuga consigliata* tono su tono <i>Suggested grout* tone on tone</i> | Consumo fuga - Kg / mq <i>Grout coverage - Kg / sqm</i> |
|--------------------------------------|--|---|--|
| MM 180 | Talco | MG - bright white 44 | 2,5 |
| MM 185 | Riso | MG - light pewter 90 | 2,5 |
| MM 190 | Cenere | MG - sterling silver 78 | 2,5 |
| MM 194 | Fango | MG - natural grey 24 | 2,5 |
| MM 198 | Ebano | MG - mocha 35 | 2,5 |
| MM 200 | Grafite | MG - raven 45 | 2,5 |
| MM 235 | Mattone | MG - terra cotta 58 | 2,5 |
| MM 240 | Salmone | MG - saltillo 92 | 2,5 |
| MM 250 | Salvia | MG - boston fern 33 | 2,5 |
| MM 255 | Maya | MG - sea glass 50 | 2,5 |
| MM 260 | Avio | MG - slate grey 91 | 2,5 |
| MM 265 | Ocra | MG - kashmir 41 | 2,5 |

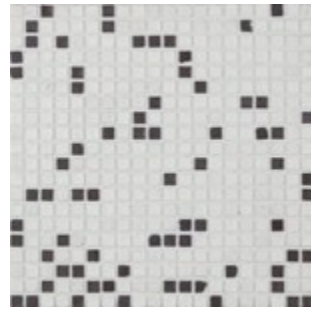
1 mq = 12 fogli 1 sqm = 12 sheets

*Suggeriamo fuga epossidica We suggest epoxy grout

| Dimensione scatola <i>Box size</i> | Dimensione fogli <i>Sheets size</i> | Fogli per scatola <i>Sheets-box</i> | mq-scatoia <i>smq-box</i> | kg-scatoia <i>kg-box</i> |
|---------------------------------------|--|--|------------------------------|-----------------------------|
| 330x330x55 mm | 290x290x4 mm | 10 | 0,84 | 4,1 |

| Dimensione pallet <i>Pallet size</i> | Contenuto pallet <i>Pallet content</i> | Fogli-pallet <i>Sheets-pallet</i> | mq-pallet <i>smq-pallet</i> | kg-pallet <i>kg-pallet</i> |
|---|---|--------------------------------------|--------------------------------|-------------------------------|
| 800x1200x880 mm | 72 scatole 72 box | 720 | 60,55 | 327 |

| Scivolosità <i>Slipperiness</i> | Resistenza agli sbalzi termici <i>Thermal shock resistance</i> | Resistenza al gelo <i>Frost resistance</i> | Resistenza agli attacchi chimici <i>Chemical resistance</i> | Resistenza alle macchie <i>Resistance to stains</i> |
|-------------------------------------|---|---|--|--|
| classe C <i>classification C</i> | resistente <i>resistant</i> | resistente <i>resistant</i> | A LA HA | resistente <i>resistant</i> |
| DIN 51097:1992 | UNI EN ISO 10545-9:2014 | UNI EN ISO 10545-12:2000 | UNI EN ISO 10545-13:2017 | UNI EN ISO 10545-14:2015 |



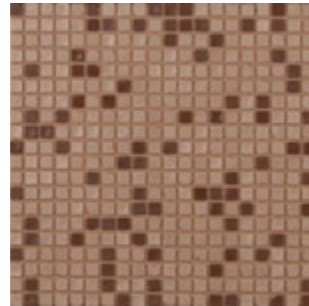
MMX 15 - Talco_Ebano



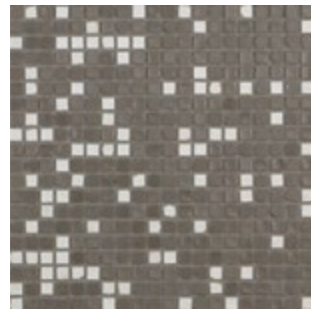
MMX 35 - Grafite_Riso



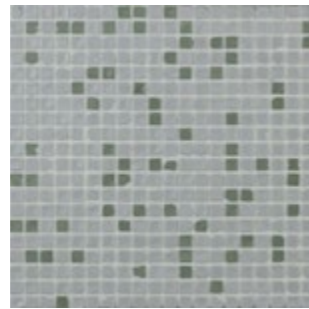
MMX 20 - Riso_Talco



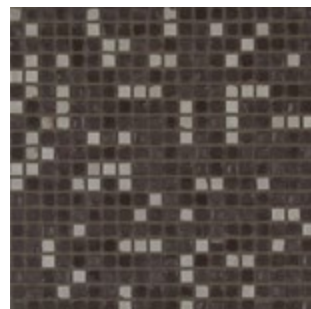
MMX 40 - Salmone_Mattone



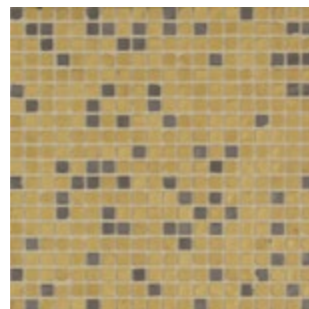
MMX 25 - Fango_Talco



MMX 45 - Maya_Salvia

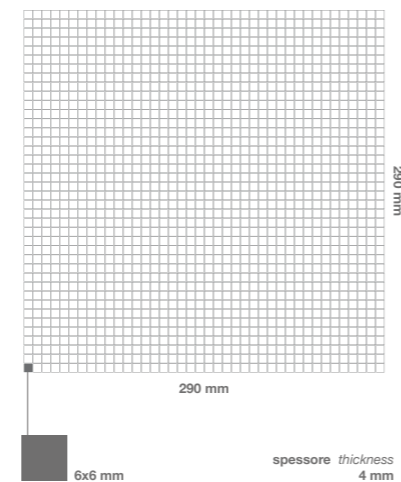


MMX 30 - Ebano_Cenere



MMX 50 - Ocra_Fango

Formati Size



| Codice mosaico <i>Mosaic code</i> | Descrizione mosaico <i>Mosaic description</i> | Fuga consigliata* tono su tono <i>Suggested grout* tone on tone</i> | Consumo fuga - Kg / mq <i>Grout coverage - Kg / sqm</i> |
|--------------------------------------|--|---|--|
| MMX 15 | Mix 15 - Talco_Ebano | MG - bright white 44 | 2,5 |
| MMX 20 | Mix 20 - Riso_Talco | MG - light pewter 90 | 2,5 |
| MMX 25 | Mix 25 - Fango_Talco | MG - natural grey 24 | 2,5 |
| MMX 30 | Mix 30 - Ebano_Cenere | MG - mocha 35 | 2,5 |
| MMX 35 | Mix 35 - Grafite_Riso | MG - raven 45 | 2,5 |
| MMX 40 | Mix 40 - Salmone_Mattone | MG - saltillo 92 | 2,5 |
| MMX 45 | Mix 45 - Maya_Salvia | MG - sea glass 50 | 2,5 |
| MMX 50 | Mix 50 - Ocra_Fango | MG - kashmir 41 | 2,5 |

1 mq = 12 fogli 1 sqm = 12 sheets

*Suggeriamo fuga epossidica We suggest epoxy grout

| Dimensione scatola <i>Box size</i> | Dimensione fogli <i>Sheets size</i> | Fogli per scatola <i>Sheets-box</i> | mq-scatola <i>smq-box</i> | kg-scatola <i>kg-box</i> |
|---------------------------------------|--|--|------------------------------|-----------------------------|
| 330x330x55 mm | 290x290x4 mm | 10 | 0,84 | 4,1 |

| Dimensione pallet <i>Pallet size</i> | Contenuto pallet <i>Pallet content</i> | Fogli-pallet <i>Sheets-pallet</i> | mq-pallet <i>smq-pallet</i> | kg-pallet <i>kg-pallet</i> |
|---|---|--------------------------------------|--------------------------------|-------------------------------|
| 800x1200x880 mm | 72 scatole <i>72 box</i> | 720 | 60,55 | 327 |

| Scivolosità <i>Slipperiness</i> | Resistenza agli sbalzi termici <i>Thermal shock resistance</i> | Resistenza al gelo <i>Frost resistance</i> | Resistenza agli attacchi chimici <i>Chemical resistance</i> | Resistenza alle macchie <i>Resistance to stains</i> |
|-------------------------------------|---|---|--|--|
| classe C <i>classification C</i> | resistente <i>resistant</i> | resistente <i>resistant</i> | A LA HA | resistente <i>resistant</i> |
| DIN 51097:1992 | UNI EN ISO 10545-9:2014 | UNI EN ISO 10545-12:2000 | UNI EN ISO 10545-13:2017 | UNI EN ISO 10545-14:2015 |