

**H70... - COSMO**

 I00595 COSMO  
 Ø 230 mm

 I00596 COSMO  
 Ø 280 mm

 Packaging Box: 6 pz/pcs  
 40x70x40

Codice/Code	Misura/Size	Braccio/Arm	Finitura/Finish	Portata acqua Water flow
<b>H70596H</b>	Ø 280 mm	350 mm - Ø 21	073 nero opaco/mat black	min 7 L/min
			045 bianco opaco/mat white	
<b>H70596I</b>	Ø 280 mm	400 mm - Ø 21	073 nero opaco/mat black	min 7 L/min
			045 bianco opaco/mat white	
<b>H70595H</b>	Ø 230 mm	350 mm - Ø 21	073 nero opaco/mat black	min 7 L/min
			045 bianco opaco/mat white	
<b>H70595I</b>	Ø 230 mm	400 mm - Ø 21	073 nero opaco/mat black	min 7 L/min
			045 bianco opaco/mat white	

**H30... - COSMO**

 I00595 COSMO  
 Ø 230 mm

 I00596 COSMO  
 Ø 280 mm

 Packaging Box: 6 pz/pcs  
 40x70x40

Codice/Code	Misura/Size	Braccio/Arm	Finitura/Finish	Portata acqua Water flow
<b>H30596G</b>	Ø 280 mm	300 mm - Ø 28	073 nero opaco/mat black	min 7 L/min
			045 bianco opaco/mat white	
<b>H30595G</b>	Ø 230 mm	300 mm - Ø 28	073 nero opaco/mat black	min 7 L/min
			045 bianco opaco/mat white	

**H19... - ELIOS**

 Packaging Box: 6 pz/pcs  
 40x40x70

 Packaging Box: 10 pz/pcs  
 40x40x70

Codice/Code	Misura/Size	Braccio/Arm	Finitura/Finish	Portata acqua Water flow
<b>H19412G</b>	Ø 250 mm	300 mm - Ø 21	073 nero opaco/mat black	min 10 L/min
			045 bianco opaco/mat white	
<b>H19417G</b>	Ø 200 mm	300 mm - Ø 21	073 nero opaco/mat black	min 9 L/min
			045 bianco opaco/mat white	

## H69... - COSMO



I00597 COSMO  
230 x 230 mm



I00598 COSMO  
280 x 280 mm



Packaging Box: 6 pz/pcs  
40x70x40

Codice/Code	Misura/Size	Braccio/Arm	Finitura/Finish	Portata acqua Water flow
<b>H69598H</b>	280 x 280 mm	350 mm - $\square$ 25	073 nero opaco/mat black	min 7 L/min
			045 bianco opaco/mat white	
<b>H69598I</b>	280 x 280 mm	400 mm - $\square$ 25	073 nero opaco/mat black	min 7 L/min
			045 bianco opaco/mat white	
<b>H69597H</b>	230 x 230 mm	350 mm - $\square$ 25	073 nero opaco/mat black	min 7 L/min
			045 bianco opaco/mat white	
<b>H69597I</b>	230 x 230 mm	400 mm - $\square$ 25	073 nero opaco/mat black	min 7 L/min
			045 bianco opaco/mat white	

## H30... - COSMO



I00597 COSMO  
230 x 230 mm



I00598 COSMO  
280 x 280 mm



Packaging Box: 6 pz/pcs  
40x70x40

Codice/Code	Misura/Size	Braccio/Arm	Finitura/Finish	Portata acqua Water flow
<b>H30598G</b>	280 x 280 mm	300 mm - $\emptyset$ 28	073 nero opaco/mat black	min 7 L/min
			045 bianco opaco/mat white	
<b>H30597G</b>	230 x 230 mm	300 mm - $\emptyset$ 28	073 nero opaco/mat black	min 7 L/min
			045 bianco opaco/mat white	

B&amp;W

## H69... - CUBE



Codice/Code	Misura/Size	Braccio/Arm	Finitura/Finish	Portata acqua Water flow
<b>H69715G</b>	260 x 260 mm	300 mm - $\square$ 25	073 nero opaco/mat black	min 10 L/min
			045 bianco opaco/mat white	
<b>H69715H</b>	260 x 260 mm	350 mm - $\square$ 25	073 nero opaco/mat black	min 10 L/min
			045 bianco opaco/mat white	
<b>H69720G</b>	210 x 210 mm	300 mm - $\square$ 25	073 nero opaco/mat black	min 9 L/min
			045 bianco opaco/mat white	
<b>H69720H</b>	210 x 210 mm	350 mm - $\square$ 25	073 nero opaco/mat black	min 9 L/min
			045 bianco opaco/mat white	



Packaging Box: 6 pz/pcs  
40x40x70



Packaging Box: 10 pz/pcs  
40x40x70

## H38391 - DREAM-RECTANGULAR

Soffione Dream da controsoffitto, con flessibile di alimentazione acqua. Installazione a controsoffitto

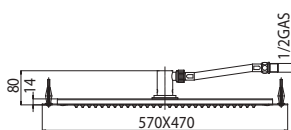
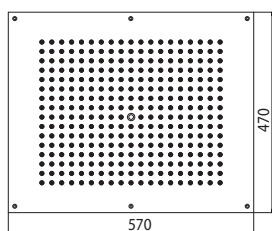
Dream shower head for false ceiling, with flexible hose for water connection

Kopfbräusen Dream mit Versorgungsschlauch.  
Montage an der Zwischendecke

Plafonds de douche Dream avec flexible pour l'alimentation d'eau.  
Installation à faux plafond

Rociadores Dream con tubo flexible de alimentación de agua.  
Instalación falso techo

Душевые лейки Dream для установки в подвесной потолок, в комплекте с гибкой подводкой для подключения к водоснабжению

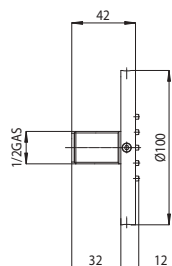


Packaging Box: 1 pz/pcs  
15x55x78

Codice/Code	Misura/Size	Finitura/Finish	Portata acqua Water flow
<b>H38391</b>	570 x 470 mm	073 nero opaco/mat black	min 16 L/min
		045 bianco opaco/mat white	

## I00175 - BODY SPRAYS - Tondo flat

Ottone - Brass - Messing - Laiton - Latón - Латунь  
1/2" M / a.G.

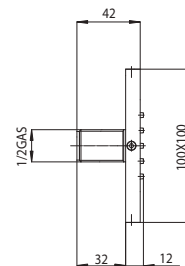


Packaging Box: 40 pz/pcs  
35x35x50

Codice/Code	Misura/Size	Finitura/Finish	Portata acqua Water flow
<b>I00175</b>	Ø 100 mm	073 nero opaco/mat black	min 6 L/min
		045 bianco opaco/mat white	

## I00176 - BODY SPRAYS - Cubic flat

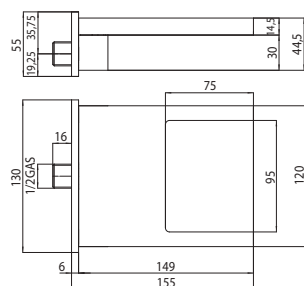
Ottone - Brass - Messing - Laiton - Latón - Латунь  
1/2" M / a.G.



Packaging Box: 40 pz/pcs  
35x35x50

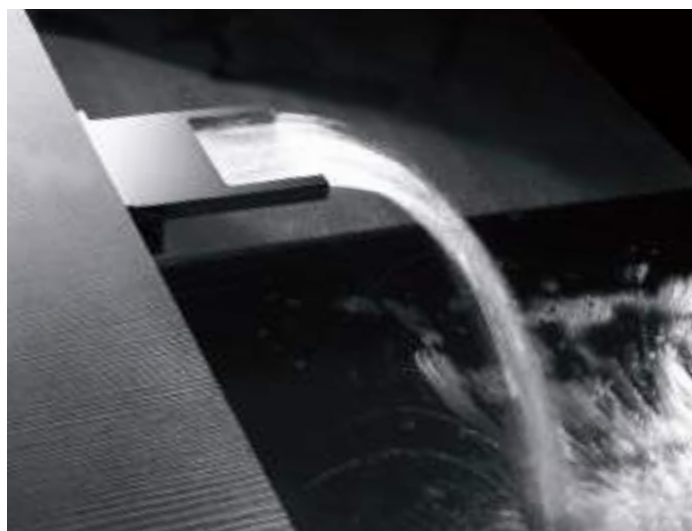
Codice/Code	Misura/Size	Finitura/Finish	Portata acqua Water flow
<b>I00176</b>	100 x 100 mm	073 nero opaco/mat black	min 6 L/min
		045 bianco opaco/mat white	

## E88500 - BOCCA CASCATA XL



Packaging Box: 12 pz/pcs  
35x50x35

Codice/Code	Misura/Size	Finitura/Finish	Portata acqua Water flow
<b>E88500</b>	120 x 155 mm	073 nero opaco/mat black	min 14 L/min
		045 bianco opaco/mat white	



**C12 - ZEN**



Packaging Box: 20 pz/pcs  
40x40x60

Codice/Code	Doccia/ Shower	Flessibile/Flex	Finitura/Finish
<b>C12002</b>	B00250 Zen	A00258 - 150 cm	073 nero opaco/mat black 045 bianco opaco/mat white

**C54 - ZEN**



Packaging Box: 20 pz/pcs  
40x40x60

Codice/Code	Doccia/ Shower	Flessibile/Flex	Finitura/Finish
<b>C54004</b>	B00250 Zen	A00258 - 150 cm	073 nero opaco/mat black 045 bianco opaco/mat white

**C13... - FLAT ONE**



Packaging Box: 20 pz/pcs  
40x40x60

Codice/Code	Doccia/Shower	Flessibile/Flex	Finitura/Finish
<b>C13011</b>	B00270 Flat-One	A00258 - 150 cm	073 nero opaco/mat black 045 bianco opaco/mat white

**CB4... - CUBE**



Packaging Box: 20 pz/pcs  
40x40x60

Codice/Code	Doccia/Shower	Flessibile/Flex	Finitura/Finish
<b>CB4003</b>	B00255 Cube	A00258 - 150 cm	073 nero opaco/mat black 045 bianco opaco/mat white

**C55... - CUBE**



Packaging Box: 20 pz/pcs  
40x40x60

Codice/Code	Doccia/ Shower	Flessibile/Flex	Finitura/Finish
<b>C55005</b>	B00255 Cube	A00258 - 150 cm	073 nero opaco/mat black 045 bianco opaco/mat white

**C51... - CUBE**



Packaging Box: 20 pz/pcs  
40x40x60

Codice/Code	Doccia/Shower	Flessibile/Flex	Finitura/Finish
<b>C51023</b>	B00255 Cube	A00258 - 150 cm	073 nero opaco/mat black 045 bianco opaco/mat white



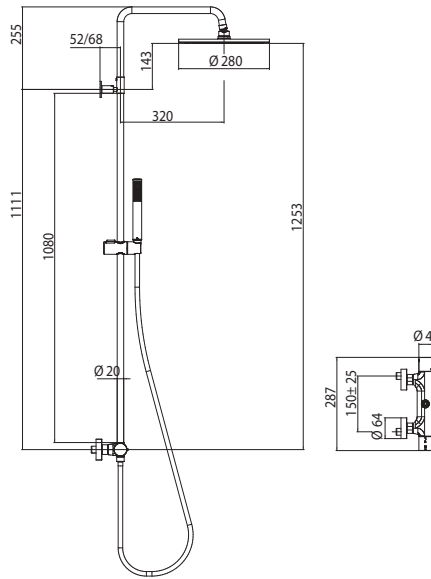


### L1.... - COSMO TERMOSTATICO

Thermostatic - Thermostatmischer - Thermostatique  
 Termóstático - Термостатический



-  I00595 COSMO  
Ø 230 mm
-  I00596 COSMO  
Ø 280 mm



Codice/Code	Misura/Size	Doccia/Shower	Flessibile/Flex	Finitura/Finish
<b>L10092</b>	Ø 280 mm	B00250 Zen	A00258 - 150 cm	073 nero opaco/mat black
				045 bianco opaco/mat white
<b>L10093</b>	Ø 230 mm	B00250 Zen	A00258 - 150 cm	073 nero opaco/mat black
				045 bianco opaco/mat white



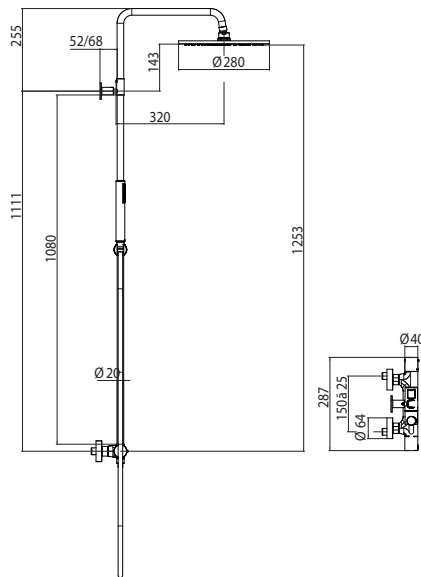
B&W

### L1.... - COSMO MONOCOMANDO

Single lever - Einhebelbatterie - Monocommande  
 Monomando - Механический



-  I00595 COSMO  
Ø 230 mm
-  I00596 COSMO  
Ø 280 mm



Codice/Code	Misura/Size	Doccia/Shower	Flessibile/Flex	Finitura/Finish
<b>L10094</b>	Ø 280 mm	B00250 Zen	A00258 - 150 cm	073 nero opaco/mat black
				045 bianco opaco/mat white
<b>L10095</b>	Ø 230 mm	B00250 Zen	A00258 - 150 cm	073 nero opaco/mat black
				045 bianco opaco/mat white



# DE3... 90 cm

Asta murale cm 90 Ø 25 mm con supporti regolabili (interasse massimo 84 cm), doccia e flessibile Cromolux 150 cm

Cm 90 Ø 25 mm slide rail with adjustable brackets (maximum fixation distance 84 cm), handshower and Cromolux 150 cm

Brausestange cm 90 Ø 25 mm mit verstellbaren Wandhalter (maximale Montagelänge 84 cm), Handbrause und 150 cm Schlauch Cromolux

Barre murale cm 90 Ø 25 mm avec supports muraux réglables (entraxe maximal 84 cm), douchette et flexible Cromolux 150 cm

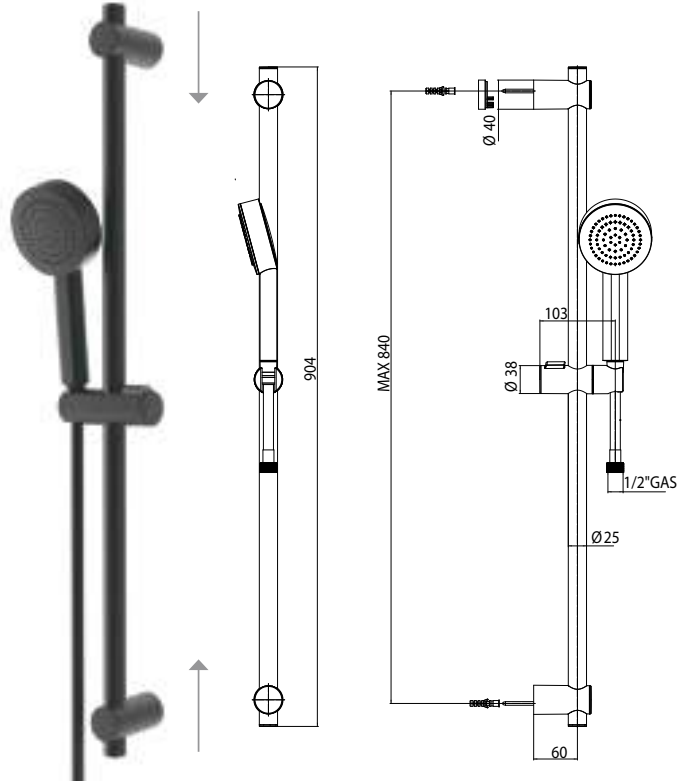
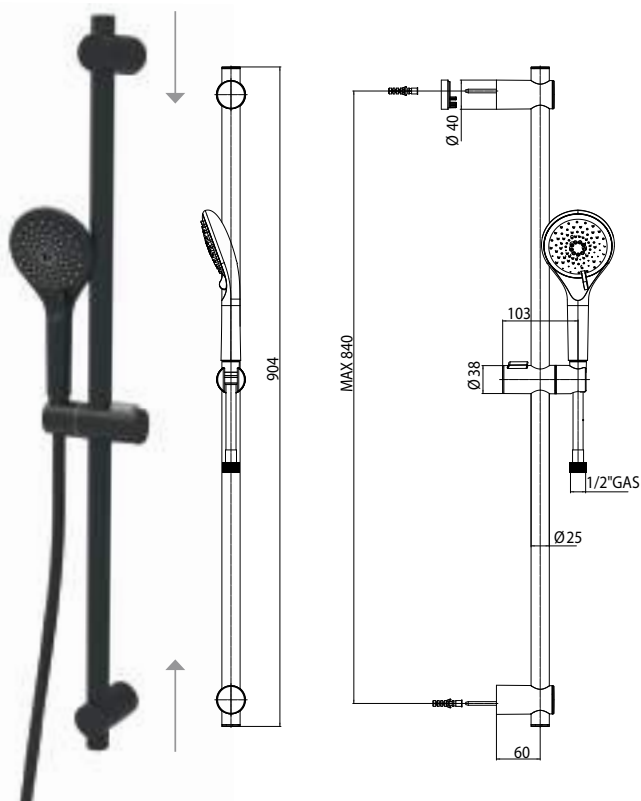
Barra deslizante cm 90 Ø 25 mm con soporte superior regulable (distancia máxima de fijación 84 cm), mango ducha y flexible en Cromolux 150 cm

Штанга настенная 90 см Ø 25 мм с регулируемым креплением, (максимальное расстояние 84 см) Ручная лейка, Шланг латунный дв.фальцевания или Cromolux 150 см



## DE3014 - SYNCRONIA/2 Ø 100

## DE3020 - KIRA/1 Ø 100



Packaging Box: 8 pz/pcs  
32x42x115



Packaging Box: 8 pz/pcs  
32x42x115

Codice/Code	Doccia/Shower	Flessibile/Flex	Finitura/Finish
<b>DE3014</b> B00805 Synchronia/2 Ø 100	A00258 - 150 cm	073 nero opaco/mat black	045 bianco opaco/mat white

Codice/Code	Doccia/Shower	Flessibile/Flex	Finitura/Finish
<b>DE3020</b> B00187 Kira/1 Ø 100	A00258 - 150 cm	073 nero opaco/mat black	045 bianco opaco/mat white

## D47...120 cm

Asta murale FLAT in ottone cm 120 con supporti a muro regolabili (interasse massimo cm 85), supporto inferiore con presa acqua incorporata

Cm 120 FLAT brass slide rail with adjustable brackets (maximum fixation distance cm 85), lower bracket with built-in water outlet

FLAT Brausestange cm 120 aus Messing mit verstellbaren Wandhalter (maximale Montagelänge 85 cm), unterer Halter mit Schlauchanschluss

Barre murale FLAT en laiton cm 120 avec supports muraux réglables (entraxe maximal 85 cm), alimentation d'eau incorporée dans le support inférieur

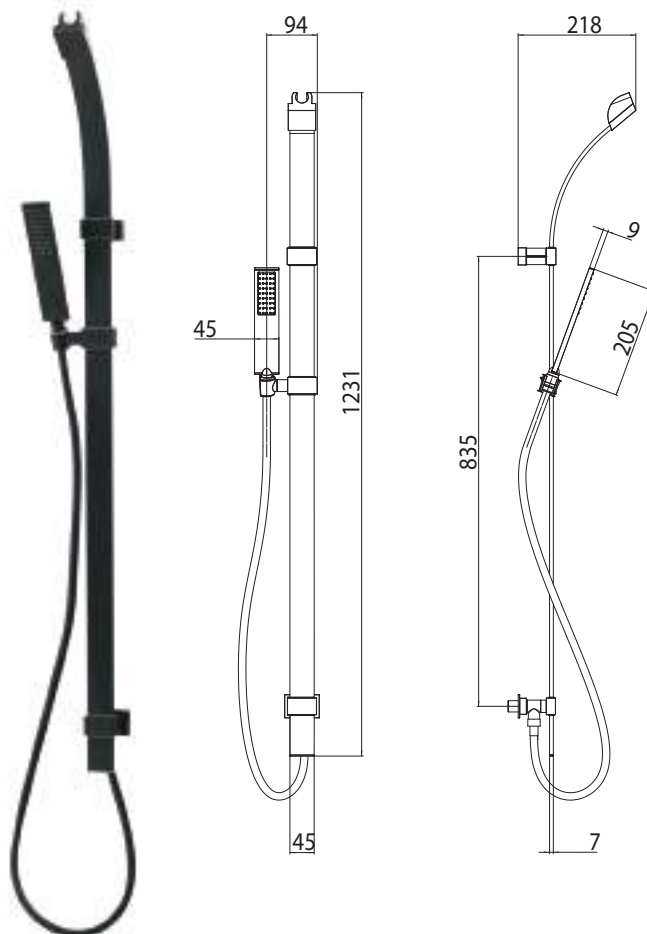
Barra deslizante FLAT en latón cm 120 con soportes regulables (distancia máxima de fijación 85 cm), toma de agua incorporada en el soporte inferior

Душевая штанга FLAT из латуни 120 см настенное крепление регулируется по высоте (максимальное расстояние 85 см), в нижний держатель встроена водорозетка



Packaging Box: 5 pz/pcs  
41x131x30

Codice/Code	Doccia/Shower	Flessibile/Flex	Finitura/Finish	Box Euro
<b>D47062</b>	B00270 Flat-One	A00258 - 150 cm	073 nero opaco/mat black 045 bianco opaco/mat white	



B&amp;W

## D74.../D06... 70 cm

Kit asta saliscendi ottone cm 70 x Ø 25 mm centrale in ABS - doccia ZEN - CROMOLUX cm 150

Set brass slide rail cm 70 x Ø 25mm with ABS slider - ZEN handshower - CROMOLUX cm 150

Set Brausestange cm70 x Ø 25 mm aus Messing mit Gleiterr aus ABS - ZEN Handbrause -CROMOLUX cm 150

Ensemble barre de douche en laiton cm 70 x Ø 25 mm avec curseur en ABS - douchette ZEN - CROMOLUX cm 150

Barra deslizante en latón cm 70 x Ø 25 mm con central en ABS - mango ducha ZEN - CROMOLUX 150 cm

Душевая штанга 70 см x Ø 25 мм с слайдером ABS - Ручная лейка ZEN - Шланг CROMOLUX 150 см



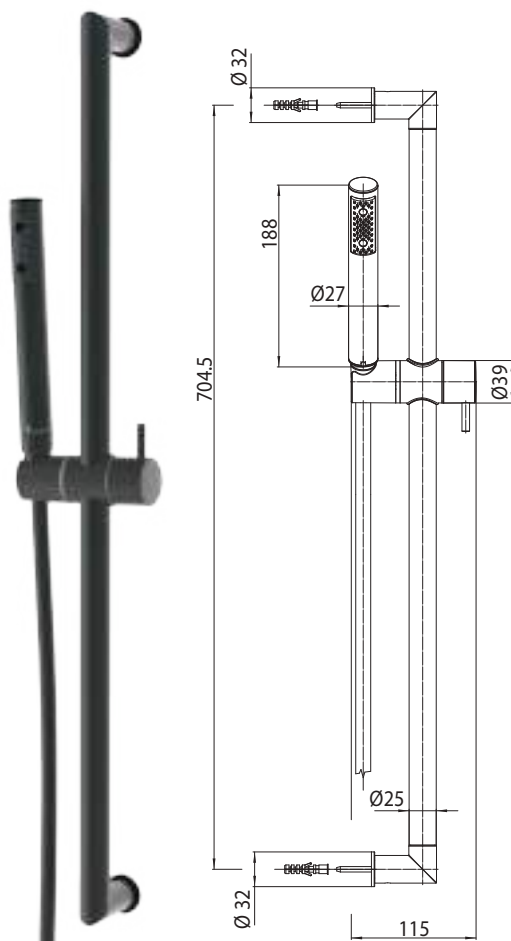
Packaging Box: x 15 pz/pcs  
50x45x82

Codice/Code	Doccia/Shower	Flessibile/Flex	Finitura/Finish	Box Euro
<b>D74201</b>	B00250 Zen	A00258 - 150 cm	073 nero opaco/mat black 045 bianco opaco/mat white	

ABS

Codice/Code	Doccia/Shower	Flessibile/Flex	Finitura/Finish	Box Euro
<b>D06012</b>	B00250 Zen	A00258 - 150 cm	073 nero opaco/mat black 045 bianco opaco/mat white	

BRASS



### Z005130

Single lever - Einhebelbatterie - Monocommande  
Monomando - Механический



Finitura/Finish

073 nero opaco/mat black

045 bianco opaco/mat white

### Z005131

Thermostatic - Thermostatmischer - Thermostatique  
Termostático - Термостатический



Finitura/Finish

073 nero opaco/mat black

045 bianco opaco/mat white

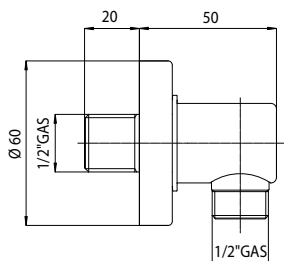
Miscelatori esterno doccia con uscita da 1/2"  
Exposed shower mixers with 1/2" outlet  
Brausebatterie Aufputz mit 1/2" Anschluss  
Mitigeur de douche exposé avec sortie 1/2"  
Gruppo ducha con salida de 1/2"  
Наружная душевая группа с выходом на 1/2"



Packaging Box: 12 pz/pcs  
35x50x35

### V00228-V00232 - 1/2" M x 1/2" M

Ottone - Brass - Messing - Laiton - Latón - Латунь



**V00228** 1/2" M x 1/2" M GAS

**V00232** 1/2" M x 1/2" M NPT

Codice/Code

Finitura/Finish



Packaging Box: 100 pz/pcs  
35x25x40

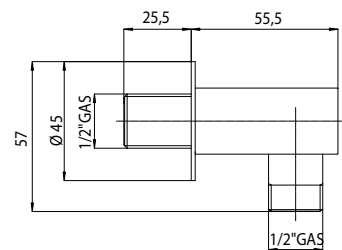
**V00228-V00232**

073 nero opaco/mat black

045 bianco opaco/mat white

### V00235 - 1/2" M x 1/2" M GAS

Ottone - Brass - Messing - Laiton - Latón - Латунь



Codice/Code

Finitura/Finish



Packaging Box: 50 pz/pcs  
40x25x25

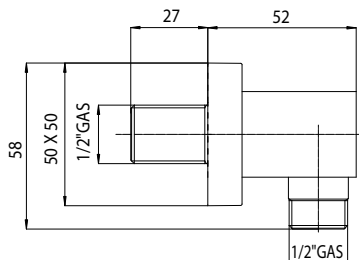
**V00235**

073 nero opaco/mat black

045 bianco opaco/mat white

### V00240 - 1/2" M x 1/2" M GAS

Ottone - Brass - Messing - Laiton - Latón - Латунь



Packaging Box: 50 pz/pcs  
40x25x25

Codice/Code

Finitura/Finish

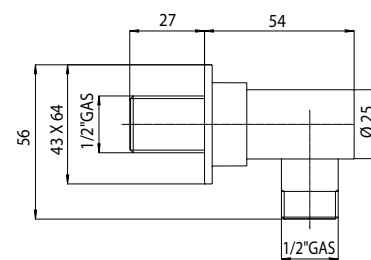
**V00240**

073 nero opaco/mat black

045 bianco opaco/mat white

### V00267 - 1/2" M x 1/2" M GAS

Ottone - Brass - Messing - Laiton - Latón - Латунь



Packaging Box: 50 pz/pcs  
25x25x40

Codice/Code

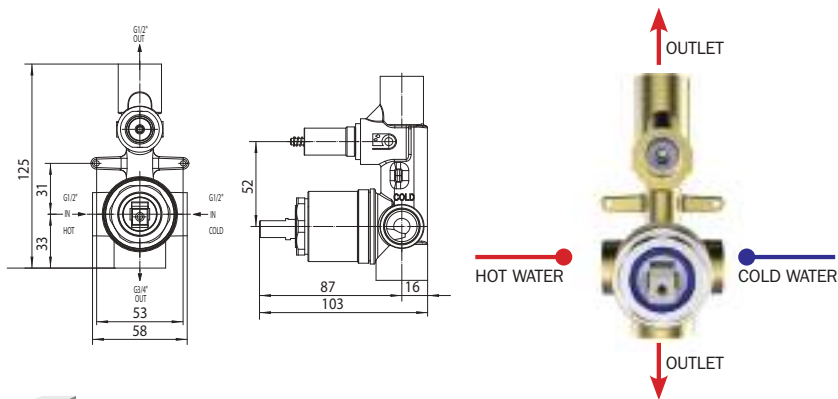
Finitura/Finish

**V00267**

073 nero opaco/mat black

045 bianco opaco/mat white

**Z00005 MISCELATORE MONOCOMANDO - 2 USCITE / OUTLETS**



Parti incasso miscelatore monocomando con deviatore 2 VIE, attacchi 1/2"

Concealed parts for single lever mixer complete with 2 WAYS diverter, 1/2" connections

Unterputz-Einbaukörper für Einhebelbatterie mit 2-WEGUMSTELLUNG, 1/2" Anschlüsse

Parties à encastre pour mitigeur monocommande avec inverseur 2 VOIES, connexions 1/2"

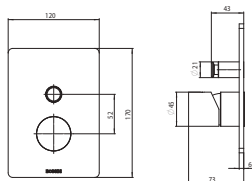
Partes de empotrado para mezclador monomando con desviador 2 VIAS, conexiones 1/2"

Смеситель механический встраиваемый с девиатором 2 направления 1/2"

Packaging Box: 12 pz/pcs  
35x40x25

Codice/Code

**Z00005**

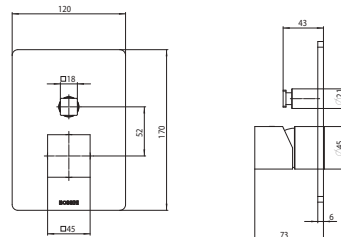


**Z00006**

Parti esterne - Exposed parts - Aufputzteile  
Parties externes - Partes externas  
Детали наружные/Детали наружные

Packaging Box: 10 pz/pcs  
35x40x25

Codice/Code	Finitura/Finish
<b>Z00006</b>	073 nero opaco/mat black
	045 bianco opaco/mat white



**Z00063**

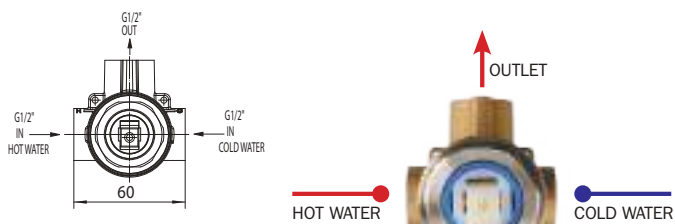
Parti esterne - Exposed parts - Aufputzteile  
Parties externes - Partes externas  
Детали наружные/Детали наружные

Packaging Box: 10 pz/pcs  
35x40x25

Codice/Code	Finitura/Finish
<b>Z00063</b>	073 nero opaco/mat black
	045 bianco opaco/mat white

B&W

**Z00007 INCASSO MONOCOMANDO 1 VIA - 1 WAY SINGLE LEVER CONCEALED PART**



Packaging Box: 12 pz/pcs  
35x40x25

Parti incasso miscelatore monocomando 1 VIA, attacco da 1/2"

Concealed parts for single lever mixer 1 WAY, 1/2" connection

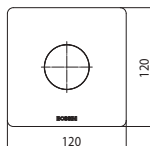
Unterputz-Einbaukörper für Einhebelbatterie, 1/2" Anschluss

Parties à encastre pour mitigeur mécanique 1 VOIE, connexion 1/2"

Partes de empotrado mezclador monomando de 1 VIÁ, conexión 1/2"

Смеситель механический встраиваемый с девиатором 1 направления 1/2"

Codice/Code	Uscite/Outlets	Box Euro
<b>Z00007</b>	1	<b>84,10</b>

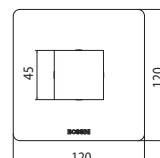


**Z00008**

Parti esterne - Exposed parts - Aufputzteile  
Parties externes - Partes externas  
Детали наружные/Детали наружные

Codice/Code	Finitura/Finish
<b>Z00008</b>	073 nero opaco/mat black
	045 bianco opaco/mat white

Packaging Box: 10 pz/pcs  
35x40x25



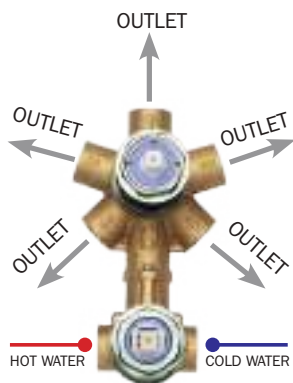
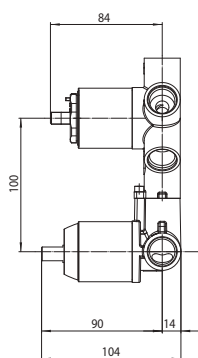
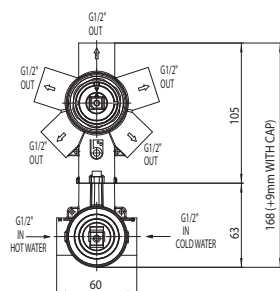
**Z00064**

Parti esterne - Exposed parts - Aufputzteile  
Parties externes - Partes externas  
Детали наружные/Детали наружные

Codice/Code	Finitura/Finish
<b>Z00064</b>	073 nero opaco/mat black
	045 bianco opaco/mat white

Packaging Box: 10 pz/pcs  
35x40x25

# Universal Single Lever MIXERS



## Z00130

Parti incasso miscelatore monocomando universale con deviatore 1-5 vie, attacchi da 1/2", completo di kit di configurazione per 1/2/3/4/5 vie (cammie di settaggio e tappi)

Concealed parts for universal single lever mixer with 1-5 ways diverter, 1/2" connections, complete with setting set for 1/2/3/4/5 outlet ways (setting cams and caps)

Unterputz-Einbaukörper für Einhebel Brausebatterie 1 bis 5-Wege einstellbar - Umsteller, 1/2" Anschlüsse und 1/2/3/4/5-Wege Einstellungsset (Einstellungsnocken und Verschlüsse)

Parties à encastrer pour mitigeur mécanique universel avec inverseur 1-5 voies, connexions 1/2" et ensemble de configuration pour 1/2/3/4/5 voies (cames et bouchons)

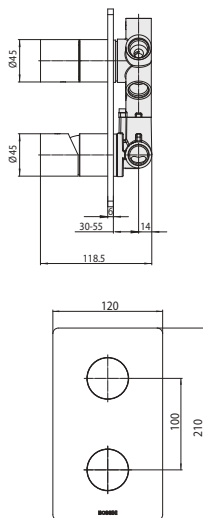
Partes empotradas para mezclador monocomando universal con desviador 1-5 vías, conexiones 1/2" y set de configuración para 1/2/3/4/5 vías (levas de configuración y tapas)

Встроенная часть однорычажного универсального смесителя с дивертером на 1-5 выхода, подключение 1/2", набор для настройки на 1/2/3/4/5 выхода ( кулачковый механизм и заглушки)

Codice/Code

**Z00130**

Packaging Box: 10 pz/pcs  
40x60x40



Packaging Box: 10 pz/pcs  
35x40x25

## Z00004

Parti esterne miscelatore termostatico 2-5 VIE

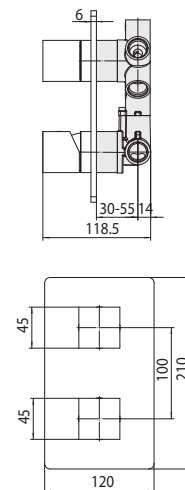
Exposed parts for 2-5 WAYS thermostatic mixer

Aufputzteile für 2-5-WEGE Thermostat-Brausebatterie

Parties externes pour mitigeur thermostatique 2-5 VOIES

Partes externas para mezclador termostático 2-5 VÍAS

Детали наружные для термостатического встраиваемого с дивертером 2-5



Packaging Box: 10 pz/pcs  
35x40x25

## Z00062

Parti esterne miscelatore termostatico 2-5 VIE

Exposed parts for 2-5 WAYS thermostatic mixer

Aufputzteile für 2-5-WEGE Thermostat-Brausebatterie

Parties externes pour mitigeur thermostatique 2-5 VOIES

Partes externas para mezclador termostático 2-5 VÍAS

Детали наружные для термостатического встраиваемого с дивертером 2-5

Codice/Code

Finitura/Finish

**Z00004**

073 nero opaco/mat black

045 bianco opaco/mat white

Codice/Code

Finitura/Finish

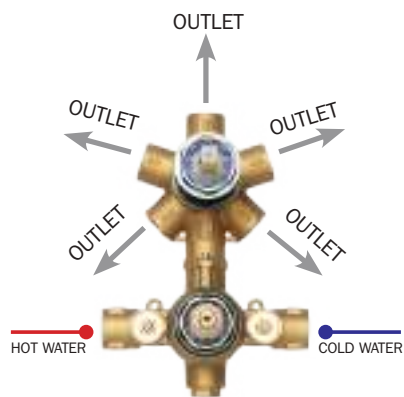
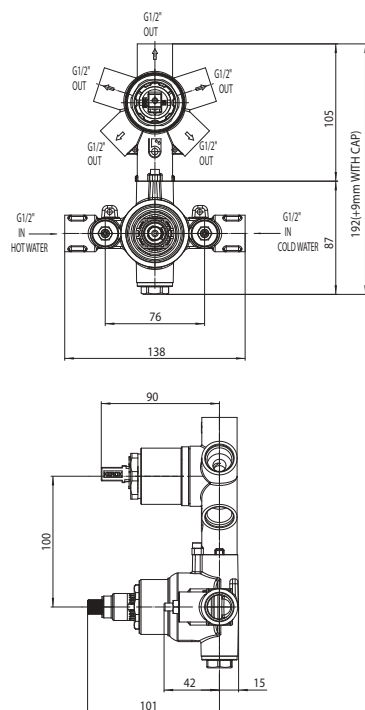
**Z00062**

073 nero opaco/mat black

045 bianco opaco/mat white



# Universal Thermostatic MIXERS



## Z00125

Parti incasso miscelatore termostatico universale con deviatore 1-5 vie, attacchi da 1/2", completo di kit di configurazione per 1/2/3/4/5 vie (camme di settaggio e tappi)

Concealed parts for universal thermostatic mixer with 1-5 ways diverter, 1/2" connections, complete with setting set for 1/2/3/4/5 outlet ways (setting cams and caps)

Unterputz-Einbaukörper für Thermostat Brausebatterie 1-bis 5-Wege Umsteller, 1/2" Anschlüsse und 1/2/3/4/5 Wege Einstellungsset (Einstellungsnocken und Verschlüsse)

Parties à encastrer pour mitigeur thermostatique universel avec inverseur 1-5 voies, connexions 1/2" et ensemble de configuration pour 1/2/3/4/5 voies (comes et bouchons)

Partes empotradas para mezclador termostático universal con desviador 1-5 vías, conexiones 1/2" y set de configuración para 1/2/3/4/5 vías (levas de configuración y tapas)

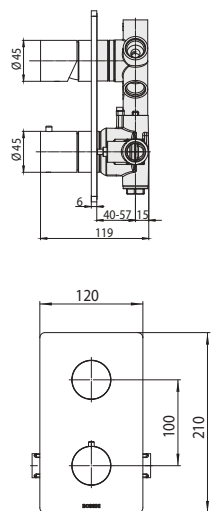
Встроенная часть терmostатического универсального смесителя с дивертером на 1-5 выхода, подключение 1/2", набор для настройки на 1/2/3/4/5 выхода ( кулачковый механизм и заглушки)

Codice/Code

**Z00125**

B&W

Packaging Box: 10 pz/pcs  
40x60x40

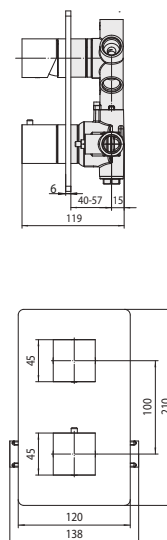


Packaging Box: 10 pz/pcs  
35x40x25

## Z00002

Parti esterne miscelatore termostatico 2-5 VIE  
Exposed parts for 2-5 WAYS thermostatic mixer  
Aufputzteile für 2-5-WEGE Thermostat-Brausebatterie  
Parties externes pour mitigeur thermostatique 2-5 VOIES  
Partes externas para mezclador termostático 2-5 VÍAS  
Детали наружные для терmostатического встраиваемого с дивертером 2-5

Codice/Code	Finitura/Finish
<b>Z00002</b>	073 nero opaco/mat black
	045 bianco opaco/mat white



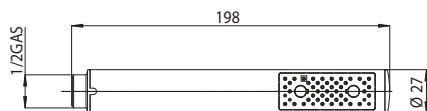
Packaging Box: 10 pz/pcs  
35x40x25

## Z00061

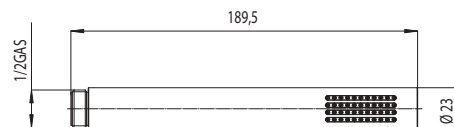
Parti esterne miscelatore termostatico 2-5 VIE  
Exposed parts for 2-5 WAYS thermostatic mixer  
Aufputzteile für 2-5-WEGE Thermostat-Brausebatterie  
Parties externes pour mitigeur thermostatique 2-5 VOIES  
Partes externas para mezclador termostático 2-5 VÍAS  
Детали наружные для терmostатического встраиваемого с дивертером 2-5

Codice/Code	Finitura/Finish
<b>Z00061</b>	073 nero opaco/mat black
	045 bianco opaco/mat white

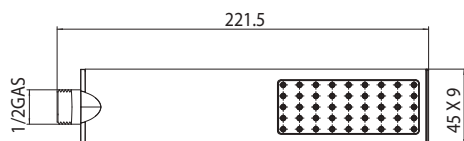


**B00250 - ZEN**

 Packaging Box: 90 pz/pcs  
25x35x40

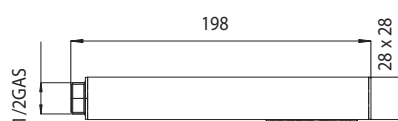
Codice/Code	Finitura/Finish	Portata acqua Water flow
<b>B00250</b>	073 nero opaco/mat black	min 5 L/min
	045 bianco opaco/mat white	

**B00253 - SLIM RAIN**

 Packaging Box: 90 pz/pcs  
25x25x40

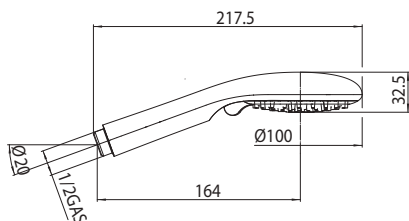
Codice/Code	Finitura/Finish	Portata acqua Water flow
<b>B00253</b>	073 nero opaco/mat black	min 5 L/min
	045 bianco opaco/mat white	

**B00270 - FLAT ONE**

 Packaging Box: 90 pz/pcs  
25x35x40

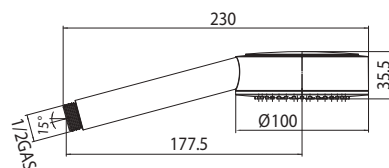
Codice/Code	Finitura/Finish	Portata acqua Water flow
<b>B00270</b>	073 nero opaco/mat black	min 5 L/min
	045 bianco opaco/mat white	

**B00255 - CUBE**

 Packaging Box: 90 pz/pcs  
25x35x40

Codice/Code	Finitura/Finish	Portata acqua Water flow
<b>B00255</b>	073 nero opaco/mat black	min 5 L/min
	045 bianco opaco/mat white	

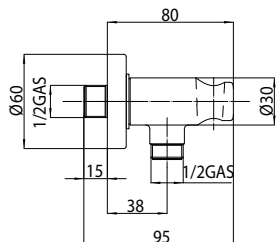
**B00805 - SINCRONIA/2**

 Packaging Box: 50 pz/pcs  
40x40x60

Codice/Code	Finitura/Finish	Portata acqua Water flow
<b>B00805</b>	073 nero opaco/mat black	min 5 L/min
	045 bianco opaco/mat white	

**B00187 - KIRA/1**

 Packaging Box: 35 pz/pcs  
40x40x60

Codice/Code	Finitura/Finish	Portata acqua Water flow
<b>B00187</b>	073 nero opaco/mat black	min 5 L/min
	045 bianco opaco/mat white	

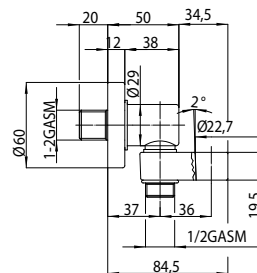
### C12000



Packaging Box: 50 pz/pcs  
25x25x40

Codice/Code	Finitura/Finish
<b>C12000</b>	073 nero opaco/mat black
	045 bianco opaco/mat white

### C54000

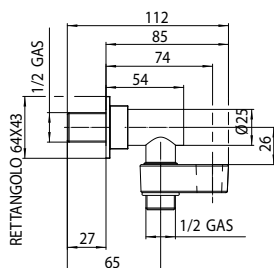


Packaging Box: 50 pz/pcs  
25x25x40

Codice/Code	Finitura/Finish
<b>C54000</b>	073 nero opaco/mat black
	045 bianco opaco/mat white

### C13000 - 1/2" M x 1/2" M GAS

Ottone - Brass - Messing - Laiton - Latón - Латунь

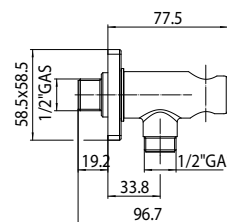


Packaging Box: 45 pz/pcs  
35x40x25

Codice/Code	Finitura/Finish
<b>C13000</b>	073 nero opaco/mat black
	045 bianco opaco/mat white

### CB4000 - 1/2" M x 1/2" M GAS

Ottone - Brass - Messing - Laiton - Latón - Латунь



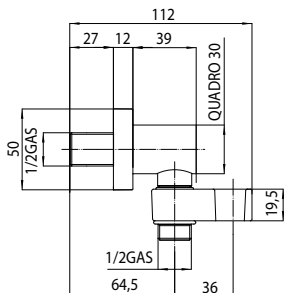
Packaging Box: 50 pz/pcs  
25x25x40

Codice/Code	Finitura/Finish
<b>CB4000</b>	073 nero opaco/mat black
	045 bianco opaco/mat white

B&W

### C55000 - 1/2" M x 1/2" M GAS

Ottone - Brass - Messing - Laiton - Latón - Латунь

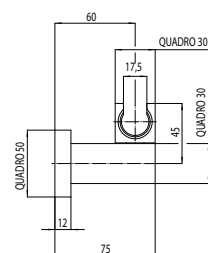


Packaging Box: 45 pz/pcs  
35x25x40

Codice/Code	Finitura/Finish
<b>C55000</b>	073 nero opaco/mat black
	045 bianco opaco/mat white

### C51000

Ottone - Brass - Messing - Laiton - Latón - Латунь



Packaging Box: 30 pz/pcs  
25x25x40

Codice/Code	Finitura/Finish
<b>C51000</b>	073 nero opaco/mat black
	045 bianco opaco/mat white

# E37-E38 Miscelatore progressivo con doccetta bidet

## Progressive mixer set with shut-off handspray

Miscelatore Progressivo con doccia a pulsante in ottone o ABS e flessibile Cromolux cm 125

Progressive mixer with brass or ABS shut-off handspray and Cromolux hose 125 cm

Progressive Mischer mit hygienischer Handbrause aus Messing oder ABS und Cromolux Schlauch cm 125

Mitigeur progressif avec douchette d'arrêt en laiton ou ABS et flexible Cromolux cm 125

Mezclador progresivo con mango ducha higiénico latón o ABS y flexible Cromolux cm 125

Прогрессивный смеситель с лейкой из латуни с или АБС клапаном подачи и шлангом Cromolux 125 см



### E37007 - PROGRESSIVE MIXER SET

Paloma-Brass



Packaging Box: 20 pz/pcs  
40x40x60

Codice/Code	Doccia/Shower	Flessibile/Flex	Finitura/Finish
<b>E37007</b>	B00470 Paloma-Brass	A00258 - 125 cm	073 nero opaco/mat black 045 bianco opaco/mat white

### E37015 - PROGRESSIVE MIXER SET

Paloma-Flat ABS



Packaging Box: 20 pz/pcs  
40x40x60

Codice/Code	Doccia/Shower	Flessibile/Flex	Finitura/Finish
<b>E37015</b>	B00462 Paloma-Flat ABS	A00258 - 125 cm	073 nero opaco/mat black 045 bianco opaco/mat white

**E37010** - PROGRESSIVE MIXER SET

Talita Brass

Packaging Box: 20 pz/pcs  
40x40x60

Codice/Code	Doccia/Shower	Flessibile/Flex	Finitura/Finish
<b>E37010</b>	B00660 Talita-Brass	A00258 - 125 cm	073 nero opaco/mat black
			045 bianco opaco/mat white

**E38003** - PROGRESSIVE MIXER SET

Cube Brass

Packaging Box: 20 pz/pcs  
40x40x60

Codice/Code	Doccia/Shower	Flessibile/Flex	Finitura/Finish
<b>E38003</b>	B00475 Cube-Brass	A00258 - 125 cm	073 nero opaco/mat black
			045 bianco opaco/mat white

B&amp;W

**A00258** - CROMOLUX 1/2" x 1/2" FF - ABS CONICAL NUT

Retinato nylon - Reinforced nylon - Verstärkt mit Nylonfäden

Renforcé nylon - Reforzado nylon - армированного нейлона



Finitura/Finish	Misura/Size
073 nero opaco/mat black	cm 125
	cm 150
	cm 175
	cm 200
045 bianco opaco/mat white	cm 125
	cm 150
	cm 175
	cm 200

Packaging Box: 40 pz/pcs  
40x40x60PE Bag: cm 125 x 100 pz/pcs  
PE Bag: cm 150 x 80 pz/pcs  
PE Bag: cm 175 / 200 x 70 pz/pcs  
40x40x60

**E57015** - STOP VALVE

Paloma ABS


 Packaging Box: 20 pz/pcs  
40x40x60

Codice/Code	Doccia/Shower	Flessibile/Flex	Finitura/Finish
-------------	---------------	-----------------	-----------------

<b>E57015</b>	B00442 Paloma ABS	A00258 - 125 cm	073 nero opaco/mat black 045 bianco opaco/mat white
---------------	-------------------	-----------------	--

**E57052** - STOP VALVE

Talita Brass


 Packaging Box: 20 pz/pcs  
40x40x60

Codice/Code	Doccia/Shower	Flessibile/Flex	Finitura/Finish
-------------	---------------	-----------------	-----------------

<b>E57052</b>	B00660 Talita-Brass	A00258 - 125 cm	073 nero opaco/mat black 045 bianco opaco/mat white
---------------	---------------------	-----------------	--

**EA4002** - STOP VALVE

Cube Brass


 Packaging Box: 20 pz/pcs  
40x40x60

Codice/Code	Doccia/Shower	Flessibile/Flex	Finitura/Finish
-------------	---------------	-----------------	-----------------

<b>EA4002</b>	B00475 Cube-Brass	A00258 - 125 cm	073 nero opaco/mat black 045 bianco opaco/mat white
---------------	-------------------	-----------------	--

**C03123** - WALL BRACKET

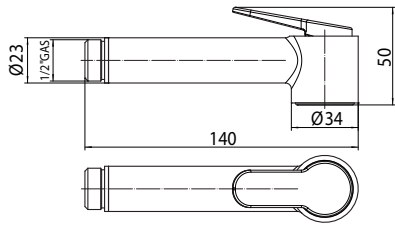
Paloma ABS


 Packaging Box: 20 pz/pcs  
40x40x60

Codice/Code	Doccia/Shower	Flessibile/Flex	Finitura/Finish
-------------	---------------	-----------------	-----------------

<b>C03123</b>	B00442 Paloma ABS	A00258 - 125 cm	073 nero opaco/mat black 045 bianco opaco/mat white
---------------	-------------------	-----------------	--

**B00470 - PALOMA BRASS**

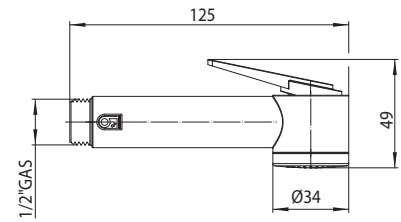


Packaging Box: 50 pz/pcs  
35x35x50

Codice/Code    Finitura/Finish    Portata acqua  
Water flow

**B00470**    073 nero opaco/mat black    min 5 L/min  
045 bianco opaco/mat white

**B00462 - PALOMA-FLAT ABS**

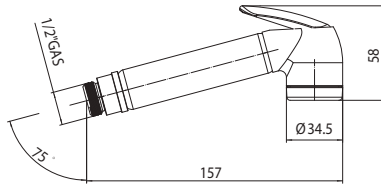


Packaging Box: 50 pz/pcs  
35x25x40

Codice/Code    Finitura/Finish    Portata acqua  
Water flow

**B00462**    073 nero opaco/mat black    min 10 L/min  
045 bianco opaco/mat white

**B00660 - TALITA BRASS**

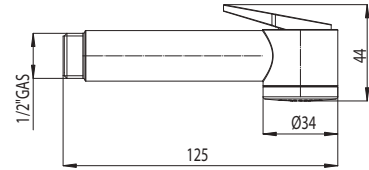


Packaging Box: 30 pz/pcs  
25x25x40

Codice/Code    Finitura/Finish    Portata acqua  
Water flow

**B00660**    073 nero opaco/mat black    min 5 L/min  
045 bianco opaco/mat white

**B00442 - PALOMA ABS**



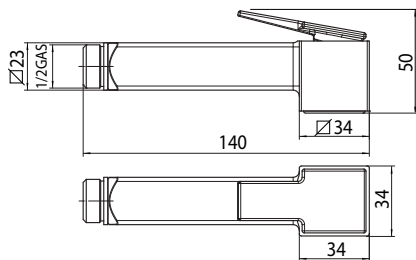
Packaging Box: 50 pz/pcs  
35x25x40

Codice/Code    Finitura/Finish    Portata acqua  
Water flow

**B00442**    073 nero opaco/mat black    min 10 L/min  
045 bianco opaco/mat white

B&W

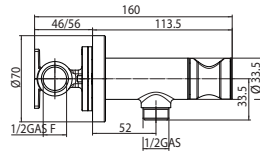
**B00475 - CUBE BRASS**



Packaging Box: 50 pz/pcs  
35x35x50

Codice/Code    Finitura/Finish    Portata acqua  
Water flow

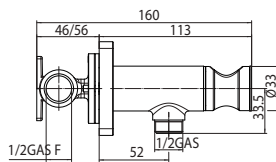
**B00475**    073 nero opaco/mat black    min 5 L/min  
045 bianco opaco/mat white

**E37000** - PROGRESSIVE MIXER


Miscelatore progressivo (acqua fredda e calda) da incasso con supporto doccia  
 Progressive mixer (hot and cold water) with shower holder  
 Progressiver Mischer (Warm-und Kaltwasser) mit Brausehalter  
 Mitigeur progressif (eau chaud et froid) à encastrer avec support de douche  
 Mezclador progresivo (agua caliente y fria) con soporte de ducha  
 Прогрессивный смеситель встраиваемый с керамическим диском и держателем лейки

Packaging Box: 1 pz/pcs  
 14,5x14,5x8

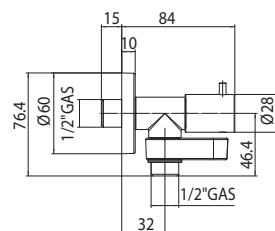
Codice/Code	Finitura/Finish
<b>E37000</b>	073 nero opaco/mat black
	045 bianco opaco/mat white

**E38000** - PROGRESSIVE MIXER


Miscelatore progressivo (acqua fredda e calda) da incasso con supporto doccia  
 Progressive mixer (hot and cold water) with shower holder  
 Progressiver Mischer (Warm-und Kaltwasser) mit Brausehalter  
 Mitigeur progressif (eau chaud et froid) à encastrer avec support de douche  
 Mezclador progresivo (agua caliente y fria) con soporte de ducha  
 Прогрессивный смеситель встраиваемый с керамическим диском и держателем лейки

Packaging Box: 1 pz/pcs  
 14,5x14,5x8

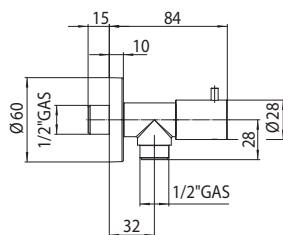
Codice/Code	Finitura/Finish
<b>E38000</b>	073 nero opaco/mat black
	045 bianco opaco/mat white

**E57000** - STOP VALVE


Rubinetto d'arresto da 1/2" M con vitone a dischi di ceramica e supporto doccia girevole  
 1/2" M stop valve with ceramic discs headwork and swiveling shower bracket  
 1/2" M a.G. Stoppventil mit Keramikscheiben-Oberteil und schwenkbarem Brausehalter  
 Robinet d'arrêt 1/2" M à disques céramiques avec support de douche orientable  
 Llave de paso de 1/2" M con discos de cerámica y soporte de ducha  
 Запорный кран на 1/2" M с керамическими дисками и поворотным держателем

Packaging Box: x 80 pz/pcs  
 35x35x50

Codice/Code	Finitura/Finish
<b>E57000</b>	073 nero opaco/mat black
	045 bianco opaco/mat white

**E57500** - STOP VALVE

Rubinetto d'arresto da 1/2" M con vitone a dischi di ceramica  
 1/2" M Stop valve with ceramic discs headwork  
 1/2" M a.G. Stoppventil mit keramik Oberteil  
 Robinet d'arrêt avec tête à disques céramiques 1/2" M  
 Llave de paso con cartucho de discos céramicos, de 1/2" M  
 Запорный кран на 1/2" M с керамическими дисками

Codice/Code

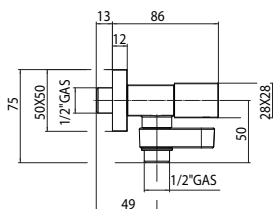
Finitura/Finish

**E57500**

073 nero opaco/mat black

045 bianco opaco/mat white

Packaging Box: x 80 pz/pcs  
 35x35x50

**EA4000** - STOP VALVE

Rubinetto d'arresto da 1/2" M con vitone a dischi di ceramica e supporto doccia girevole  
 1/2" M stop valve with ceramic discs headwork and swiveling shower bracket  
 1/2" M a.G. Stoppventil mit Keramikscheiben-Oberteil und schwenkbarem Brausehalter  
 Robinet d'arrêt 1/2" M à disques céramiques avec support de douchette orientable  
 Llave de paso de 1/2" M con discos de cerámica y soporte de ducha  
 Запорный кран на 1/2" M с керамическими дисками и поворотным держателем

Codice/Code

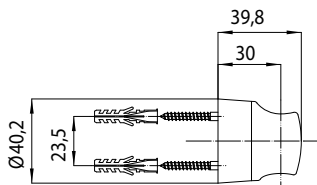
Finitura/Finish

**EA4000**

073 nero opaco/mat black

045 bianco opaco/mat white

Packaging Box: x 80 pz/pcs  
 35x35x50

**C03000**

Supporto doccia fisso in ABS  
 ABS fixed wall bracket  
 Brausehalter aus ABS  
 Support fixe ABS  
 Soporte mural fijo ABS  
 Душевой держатель фиксированный из ABS

Codice/Code

Finitura/Finish

**C03000**

073 nero opaco/mat black

045 bianco opaco/mat white

Packaging Box: 300 pz/pcs  
 40x40x60