

## RIGATINO

### Articolo: RIGATINO1

**Materiale:** Flumood / Colormood / Legno: Rovere Thermo, Noce Canaletto, Rovere Naturale

**Troppopieno:** NO

**Peso lordo:** kg 28 colonna + 8 bacino ca.

**Peso netto:** kg 23 colonna + 7 bacino ca.

**Dimensione imballo:** cm 80 x 50 x 50 colonna cm 52 x 52 x 24 bacino

**Descrizione:** Lavabo da terra con bacino in Flumood o Colormood e colonna in legno. Completo di scarico a pavimento, piletta a scarico libero, sifone e tubo flessibile.

### Article: RIGATINO1

**Material:** Flumood / Colormood / Wood: Rovere Thermo, Noce Canaletto, Rovere Naturale

**Overflow:** NO

**Gross weight:** kg 28 base + 8 sink ca.

**Net weight:** kg 23 base + 7 sink ca.

**Packing dimensions:** cm 80 x 50 x 50 base cm 52 x 52 x 24 sink

**Description:** Freestanding sink with Flumood or Colormood sink and wood base. Complete with floor drainage, open plug, siphon, and flexible hose.



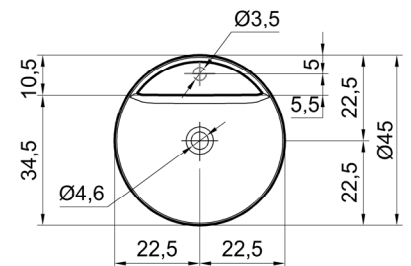
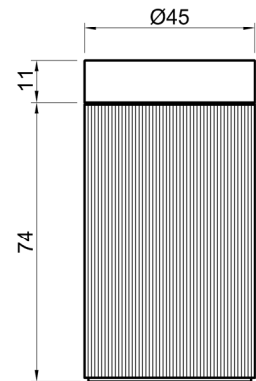
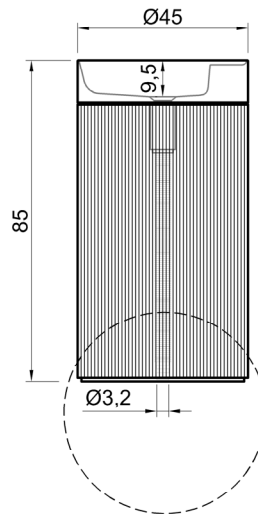
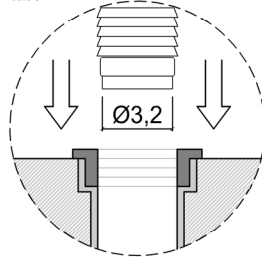
### \* Optional Troppopieno - Overflow



posizione troppopieno / overflow position



Predisporre scarico a pavimento per tubo Ø3,2cm  
Prepare the floor drain for a Ø3,2cm tube



## RIGATINO

### Articolo: RIGATINO2

**Materiale:** Pietra: Carrara, Nero Marquina, Calacatta Viola, Port Laurent, Emperador, Rosso Levanto, Verde Alpi, Pietra Stone Gray / Legno: Rovere Thermo, Noce Canaletto, Rovere Naturale

**Troppopieno:** NO

**Peso lordo:** kg 28 colonna + 33 bacino ca.

**Peso netto:** kg 22 colonna + 26 bacino ca.

**Dimensione imballo:** cm 80 x 50 x 50 colonna cm 54 x 54 x 28 bacino

**Descrizione:** Lavabo da terra con bacino in pietra e colonna in legno.  
Completo di scarico a pavimento, piletta a scarico libero, sifone e tubo flessibile.

### Article: RIGATINO2

**Material:** Stone: Carrara, Nero Marquina, Calacatta Viola, Port Laurent, Emperador, Rosso Levanto, Verde Alpi, Pietra Stone Gray / Wood: Rovere Thermo, Noce Canaletto, Rovere Naturale

**Overflow:** NO

**Gross weight:** kg 28 base + 33 sink ca.

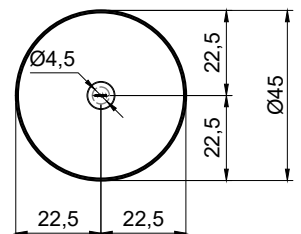
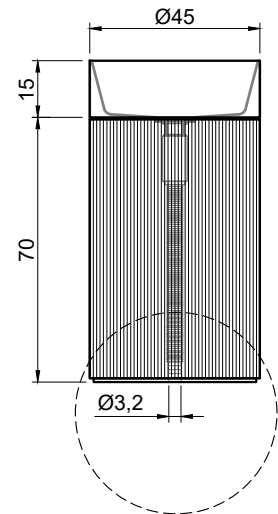
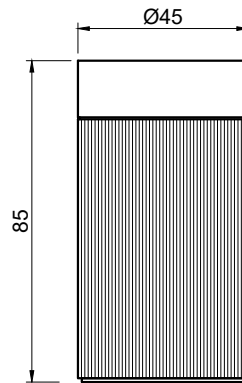
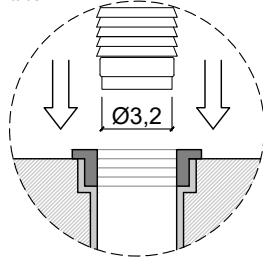
**Net weight:** kg 22 base + 26 sink ca.

**Packing dimensions:** cm 80 x 50 x 50 base cm 54 x 54 x 28 sink

**Description:** Freestanding sink with stone sink and wood base. Complete with floor drainage, open plug, siphon, and flexible hose.



Predisporre scarico a pavimento per tubo Ø3,2cm  
Prepare the floor drain for a Ø3,2cm tube



**ATTENZIONE**

Si declina ogni responsabilità relativa ad eventuali inesattezze contenute in queste istruzioni dovute ad errori di trascrizione.

**WARNING**

We decline all responsibility and eventual inaccuracy contained in the instructions due to transcript errors.

**ATTENTION**

Nous ne nous retenons pas responsable des erreurs éventuelles contenu dans ces instructions dues à une mauvaise transcription.

**ACHTUNG**

Für eventuelle Fehler bei der Übersetzung der technischen Liste weißt Antonio Lupi Design S.p.A jegliche Verantwortung von sich.

**ATENCIÓN**

Declinamos cualquier responsabilidad por eventuales inexactitudes contenidas en estas instrucciones debidas a errores de transcripción.

**ВНИМАНИЕ**

Компания снимает с себя любую ответственность за возможные неточности, содержащиеся в данных инструкциях и возникшие при перепечатке материалов.

# antoniolupi

## 73

VIA MAZZINI

## 75

Antonio Lupi Design S.p.A.  
via Mazzini 73/75 - 50050 Stabbia  
Cerreto Guidi (Firenze) - Italy  
T +39 0571 586881\_95651  
[www.antoniolupi.it](http://www.antoniolupi.it)  
[lupi@antoniolupi.it](mailto:lupi@antoniolupi.it)